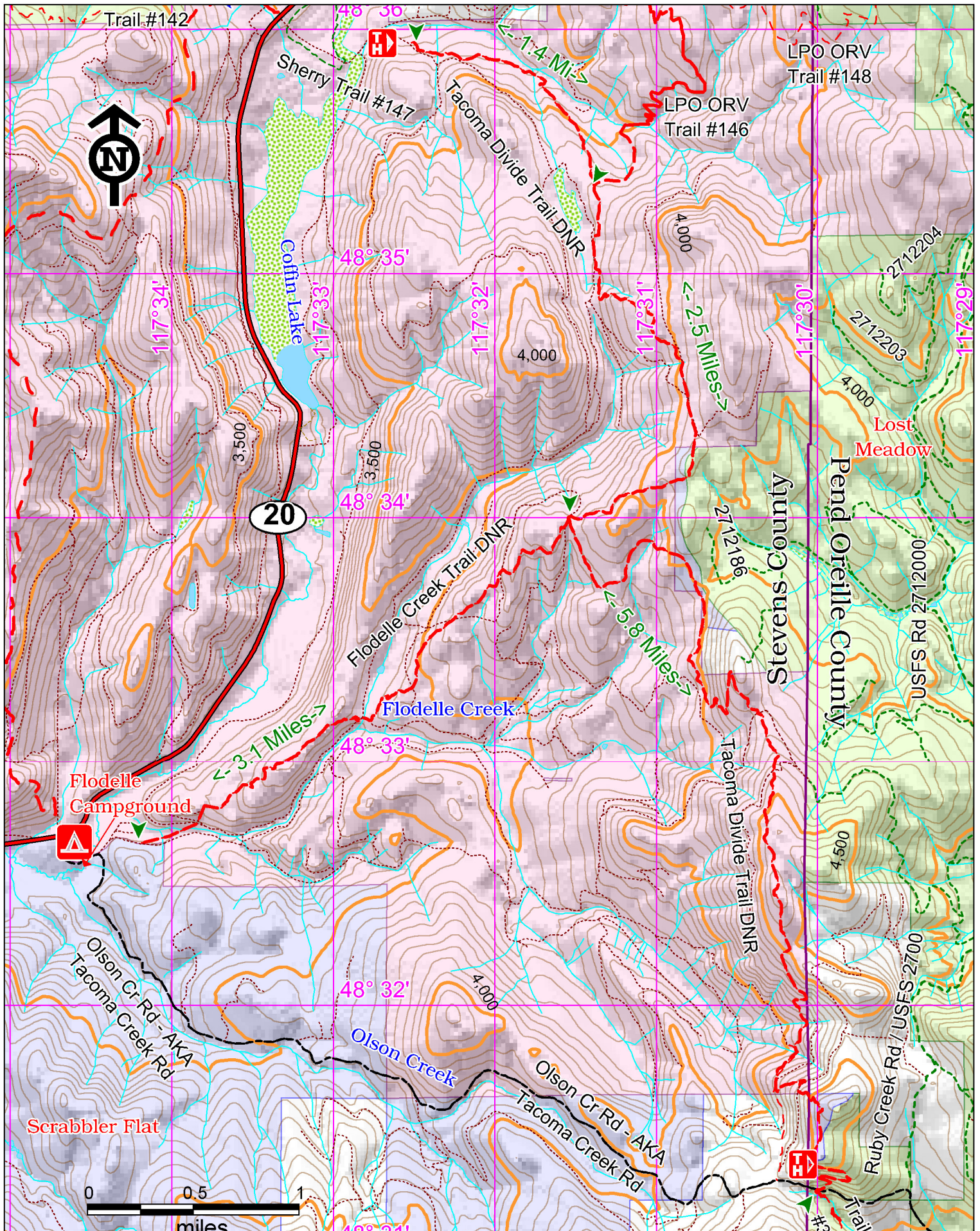


Tacoma Divide ORV Trail - 12.8 Miles



Access:

From the intersection of State Hwy 20 and US Hwy 395 in Colville travel east 19.5 miles to Olson Cr/Tacoma Creek Rd. Turn right, the Flodelle Creek Campground is on the left. Flodelle Creek Trail starts from the campground.

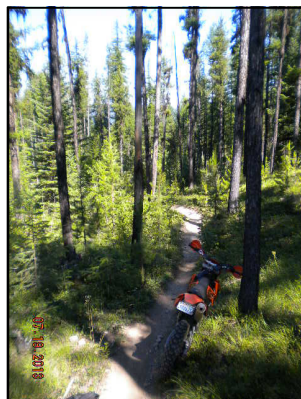
Or continue east from Olson Cr/Tacoma Creek Rd 4.5 miles and turn right and drive .5 miles to on the road to Sherry Campground. Tacoma Divide trail starts across the road from the campground entrance.



Points of Interest



Tacoma Divide Trailhead

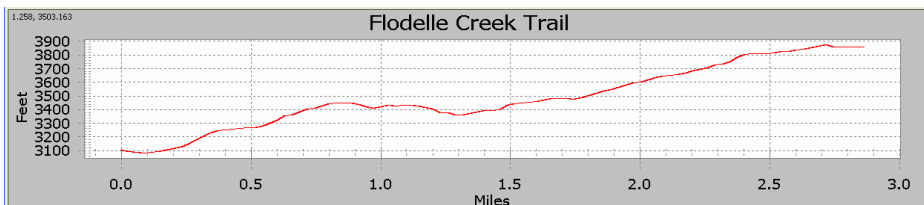
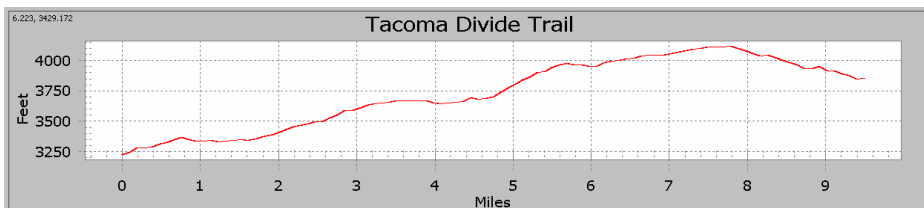


Tacoma Divide Trail

History:

Cautions:

A helmet is required on quads and motorcycles. Speed limit is 25 MPH.

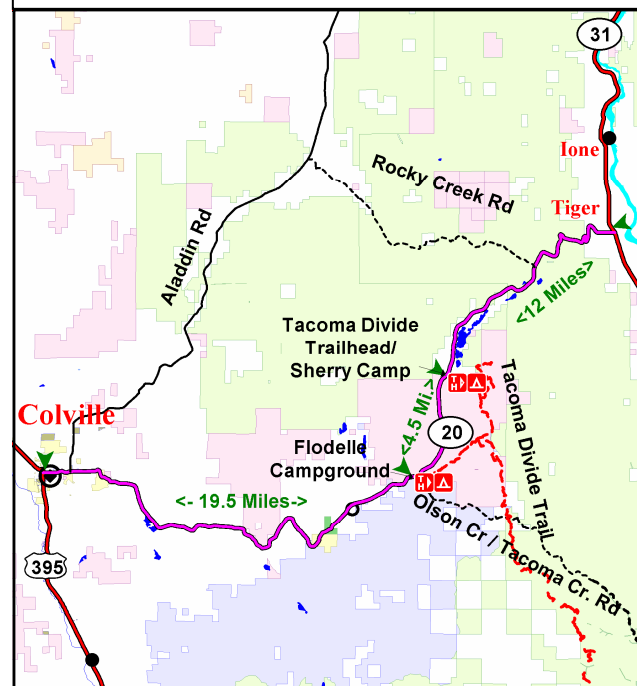


Tacoma Divide and Flodelle Trails

| Characteristics | Tacoma Divide | Flodelle Creek |
|------------------------|----------------------|----------------|
| Elevation at Trailhead | 3235 ft | 3100 ft |
| Highest Point | 4100 ft | 3880 ft |
| Elevation Change | 865 ft | 780 ft |
| Length | 9.6 Miles | 3 Miles |
| Difficulty | Moderate | Difficult |
| Season | Spring, Summer, Fall | |

Description:

Camping is available at Flodelle Creek and Sherry Creek Campgrounds at either end of the Tacoma Divide and Flodelle Creek trails. A Discover Pass is needed to park on State Land. Camping is allowed in designated campsites only. These trails climb to a peak That has views of Flodelle Creek. Dry mountain, wet creek bottoms and forested terrain affords challenges for skilled riders.



Emergency phone number: 911

For more information:

Colville DNR
Office
(509) 684-7474