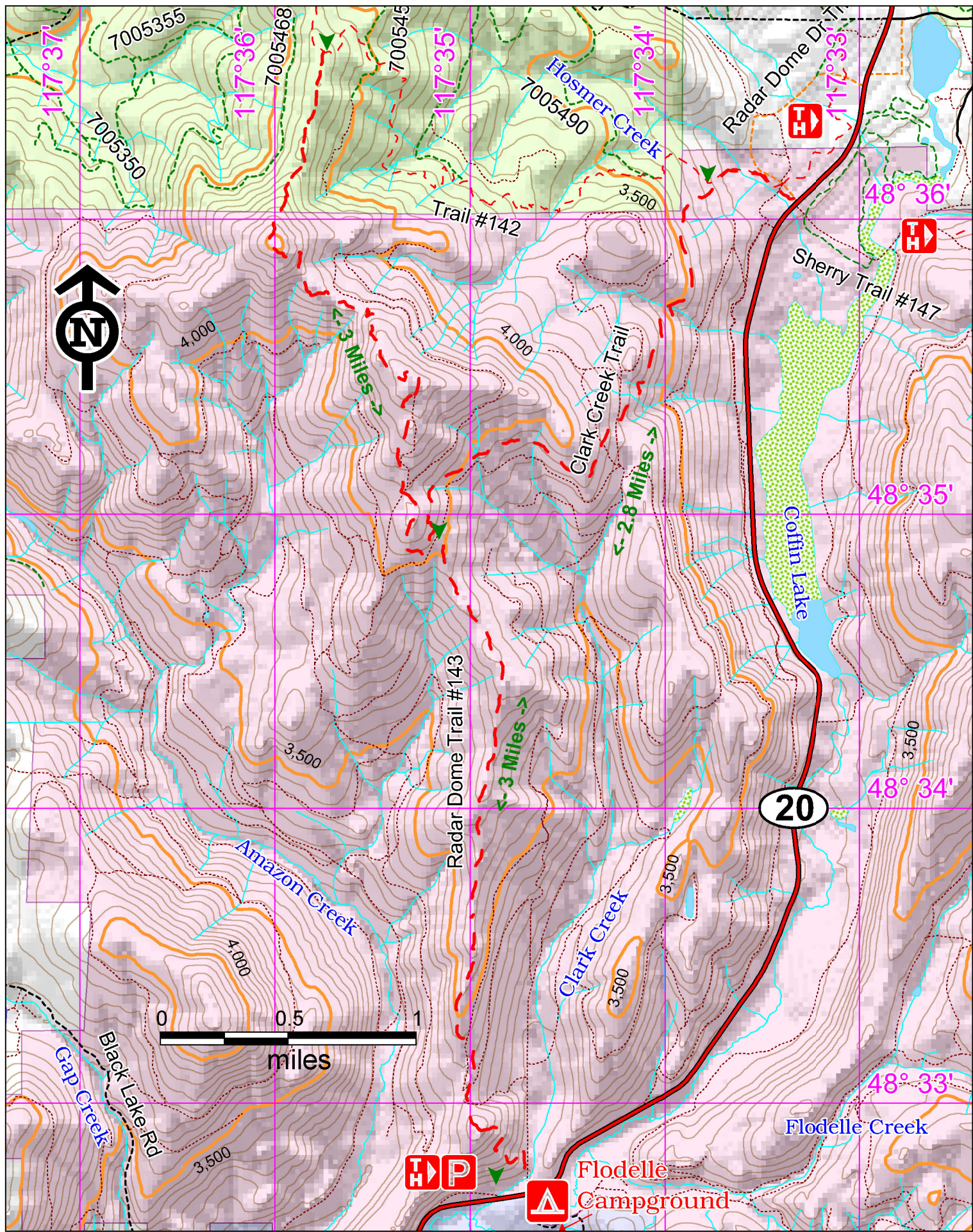


# Radar Dome and Clark Creek ORV Trails -



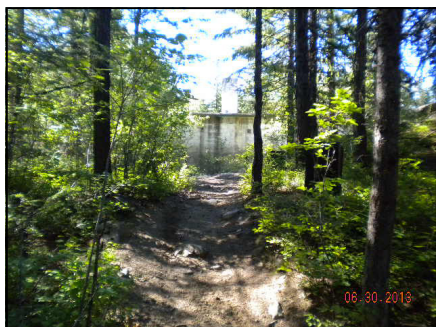
## Access:

From the intersection of State Hwy 20 and US Hwy 395 in Colville travel east 19.5 miles to Olson Cr/Tacoma Creek Rd. Turn Left. The Radar Dome trailhead is across the highway from the county road.

Or continue east from Olson Cr/Tacoma Creek Rd 4.5 miles and turn left. The Clark Creek trail starts across State Hwy 20 from the Sherry campground access road.



## Points of Interest



Radar Dome Trail & Bldg.

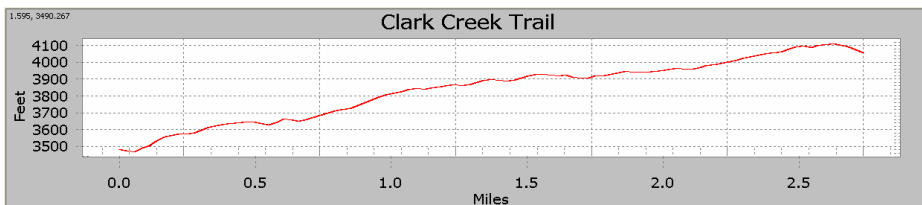
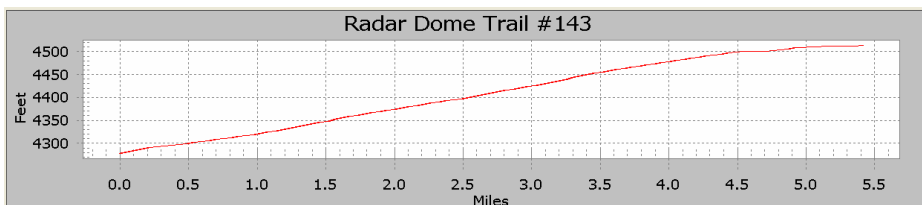


Radar Dome Trailhead

## History:

## Cautions:

A helmet is required on quads and motorcycles. Speed limit is 25 MPH.

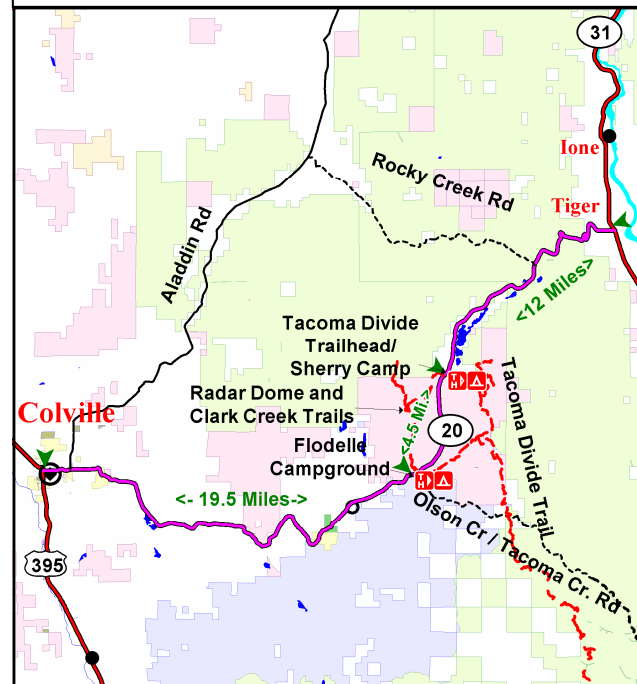


## Radar Dome and Clark Creek Trails

Characteristics	Radar Dome	Clark Creek
Elevation at Trailhead	3250 ft	3470 ft
Highest Point	4550 ft	4110 ft
Elevation Change	1300 ft	640 ft
Length	5.5 Miles	2.8 Miles
Difficulty	Moderate	Moderate
Season	Spring, Summer, Fall	

## Description:

Camping is available at Flodelle Creek and Sherry Creek Campgrounds at either end of the Tacoma Divide and Flodelle Creek trails. A Discover Pass is needed to park on State Land. Camping is allowed in designated campsites only. The Radar Dome trail ties into USFS Trail #142. Clark Creek cuts off and ties into the Sherry Campground. Dry mountain, wet creek bottoms and forested terrain affords challenges for skilled riders.



Emergency phone number: 911

For more information:

Colville DNR  
Office  
(509) 684-7474