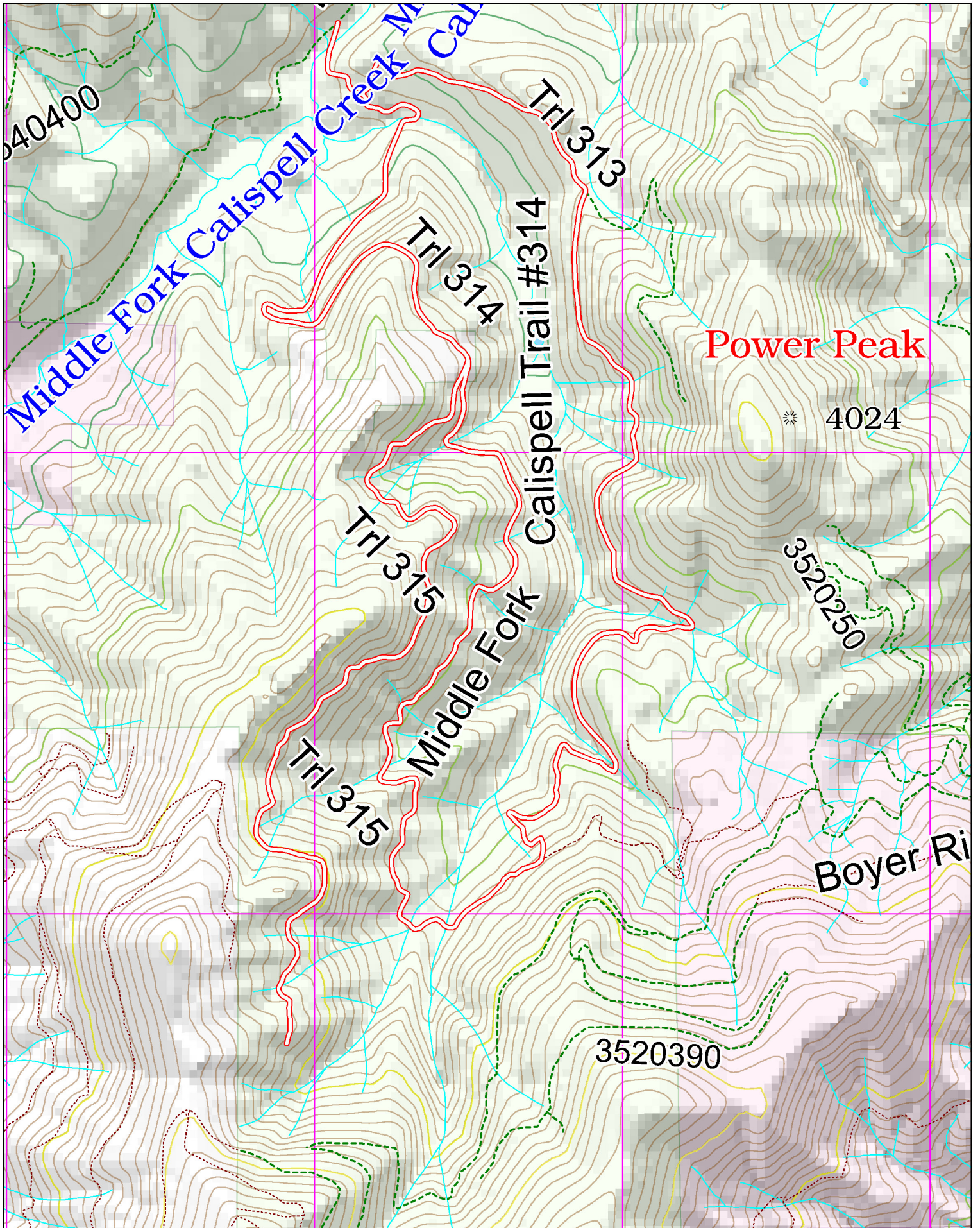


# Middle Fork ATV Area





**Access:**

From the intersection of State Hwy 20 and US Hwy 2 in Newport, travel 11 miles north to the junction with Calispell Road. Travel 6.7 miles crossing State Hwy 211 and turn left on Middle Fork Calispell Road. Travel 4.3 miles to the Middle Fork Calispell Creek OHV Trails on the left.



**Points of Interest**



Middle Fork Trailhead



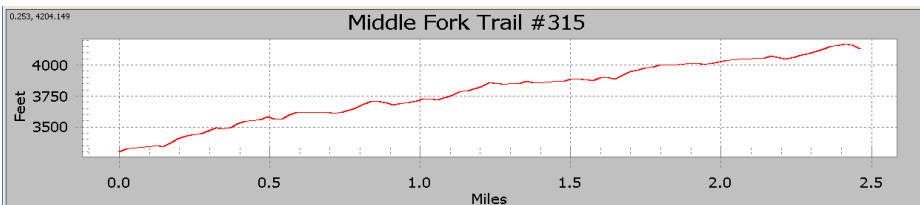
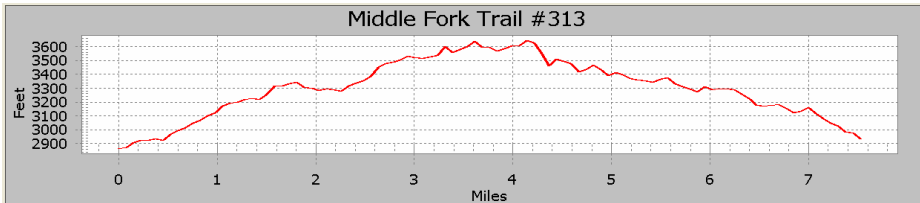
Starting up the trail

**History:**

This creek, lake and Mountain were named for the Kalispell Tribe of Indians whose reservation is east of Usk.

**Cautions:**

A helmet is required on quads and motorcycles. Speed limit is 25 MPH.

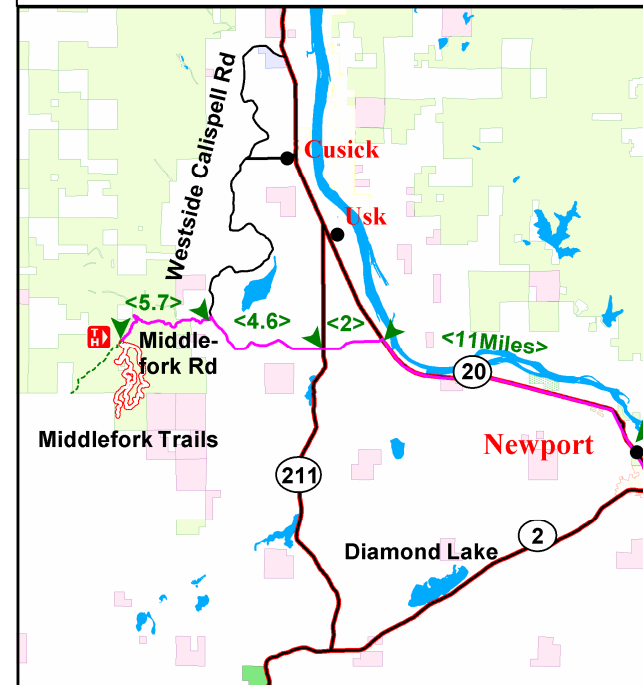


**Middle Fork ATV Trails #313, #315**

Characteristics	#313	#315
Elevation at Trailhead	2850 ft	3300 ft
Highest Point	3650 ft	4200 ft
Elevation Change	800 ft	900 ft
Length	7.6 Miles	2.5 Miles
Difficulty	Easy to Difficult	Easy to Difficult
Season	Spring, Summer, Fall	

**Description:**

These are the only designated OHV Trails on the Colville National Forest. The terrain varies from forested to open meadows. Trails follow old logging roads. Off Highway Vehicles, (OHV) are allowed on many other roads in the Colville National Forest. Please consult the latest Motor Vehicle Use Map for more information.



Emergency phone number: 911

For more information:

**Colville DNR Office**  
(509) 684-7474