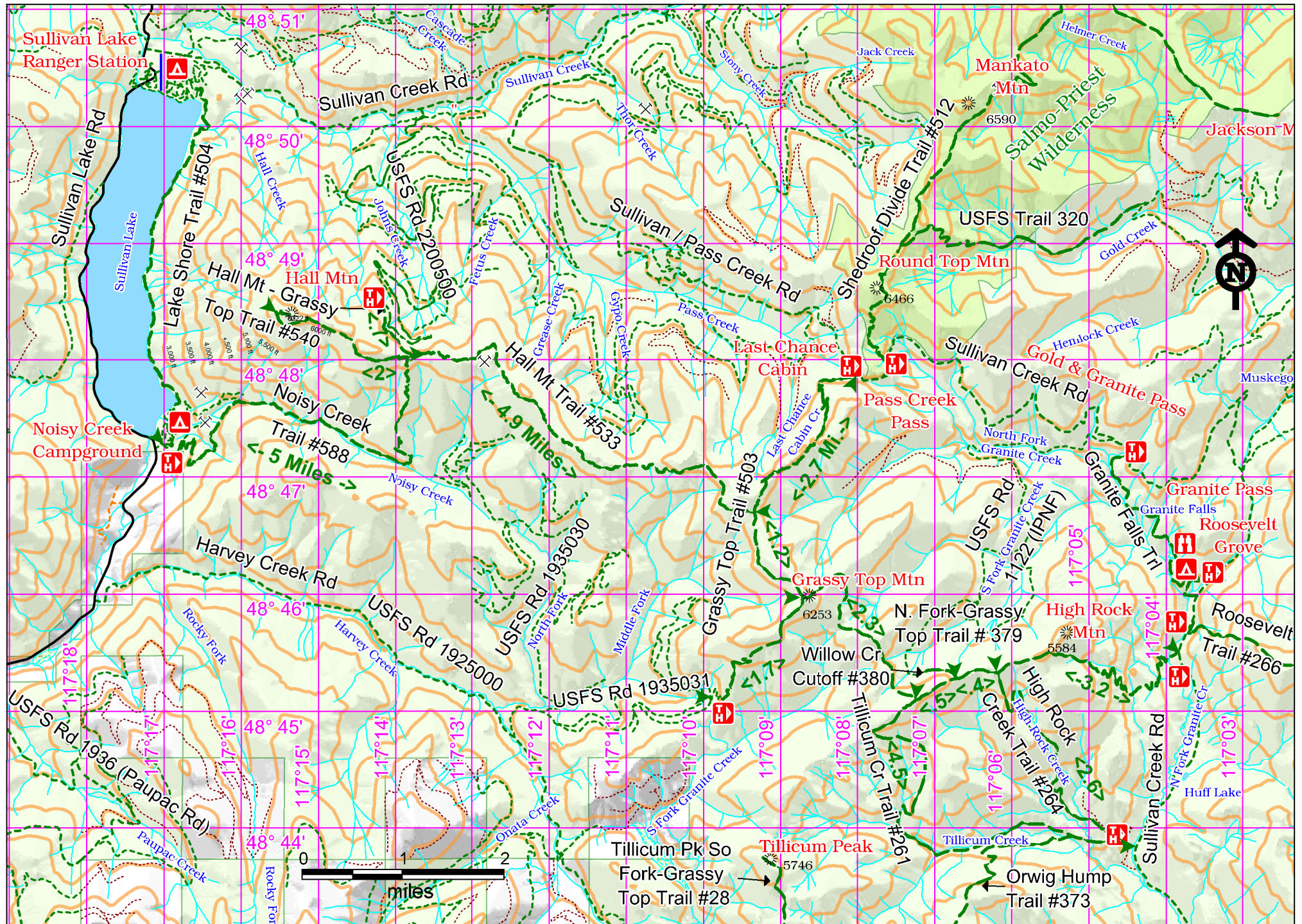


# Hall Mountain, Grassy Top, Noisy Creek Trails





## Access:

From Hwy 31 head east over the Ione Bridge 8 miles to Noisy Cr Campground and the Noisy Cr. Trailhead. Continue 4.75 miles. Turn right on Sullivan Cr. Rd. Travel 3.1 miles to FS Rd 2200 500. Turn right and travel 7.3 steep miles to the Hall Mt #540 trailhead or continue 2.8 miles further on Sullivan Cr Rd and turn right on Sullivan/Pass Cr Rd. Travel 6 miles to the Grassy Top #503 trailhead. Continue 6.7 miles to USFS Rd #302, turn right and travel 3 miles to the North Fork Grassy Top Trail #379. There is also access to the south end of Grassy Top #503 via Harvey Creek, turn left on FS Rd #5030 and then right on FS Rd 5031. Travel 2.2 miles to trail #503.



## Points of Interest

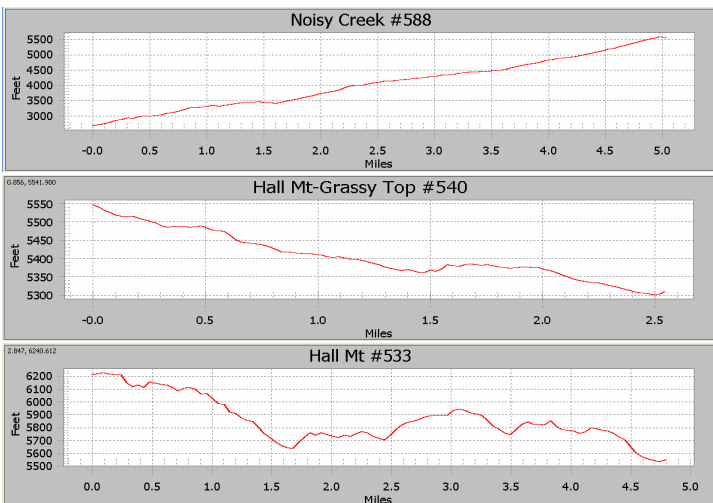


Grassy Top Trail



Noisy Creek

## History:



## Cautions:

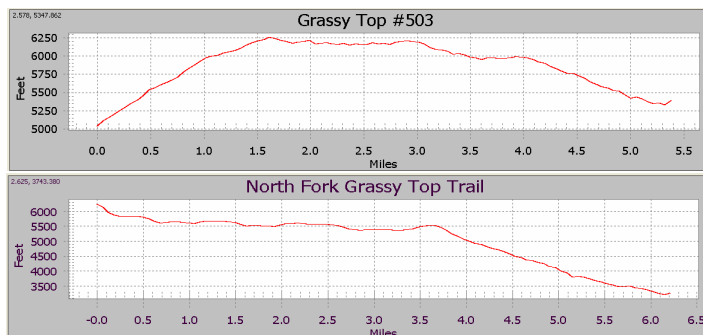
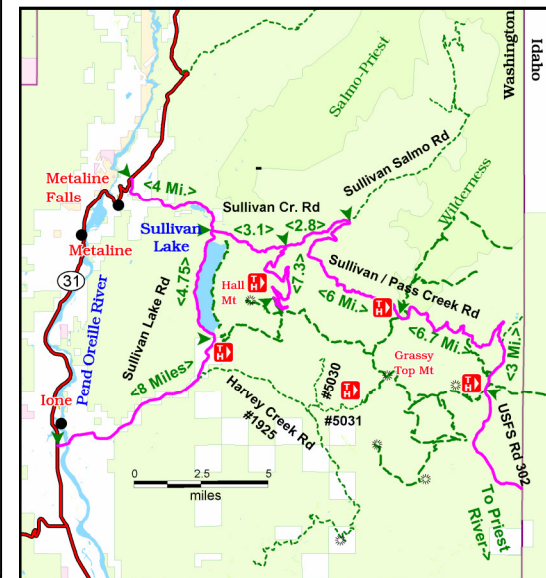
Be prepared for changes in weather. You may encounter bears and other wildlife. Take all precautions necessary to store your food safely and defend your space. No drinkable water is available along these trails without filtration.

## Noisy Creek #588, Hall Mt #533, Grassy Top #503, Hall Mt-Grassy Top #540, North Fork-Grassy Top #379

Characteristics	#588	#533	#503	#540	#379
Elevation at Trailhead	2800 ft	5550 ft	5050 ft	5310 ft	3450 ft
Highest Point	5500 ft	6250 ft	6250 ft	5550 ft	6250 ft
Elevation Change	2700 ft	700 ft	1200 ft	240 ft	2800 ft
Length	5.3 Mi.	5 Mi.	5.5 Mi.	2.3 Mi.	6.3 Mi.
Difficulty	Difficult	Difficult	Difficult	Moderate	Difficult
Season	Summer	Summer	Summer	Summer	Summer

## Description:

This complex of trails provides multiple ways to enjoy the Grassy Top and Hall Mt Ridge. The trails shown in the Panhandle National Forest, Willow Cr., Tillicum, High Rock and Orwig hump are no longer maintained and are not advised for hiking. The North Fork Grassy Top Trail however is still in well-used. All are Grizzly habitat and have been proposed for wilderness designation.



Emergency phone number: 911

For more information:

**Sullivan Lake  
Ranger District  
(509) 446-7500**