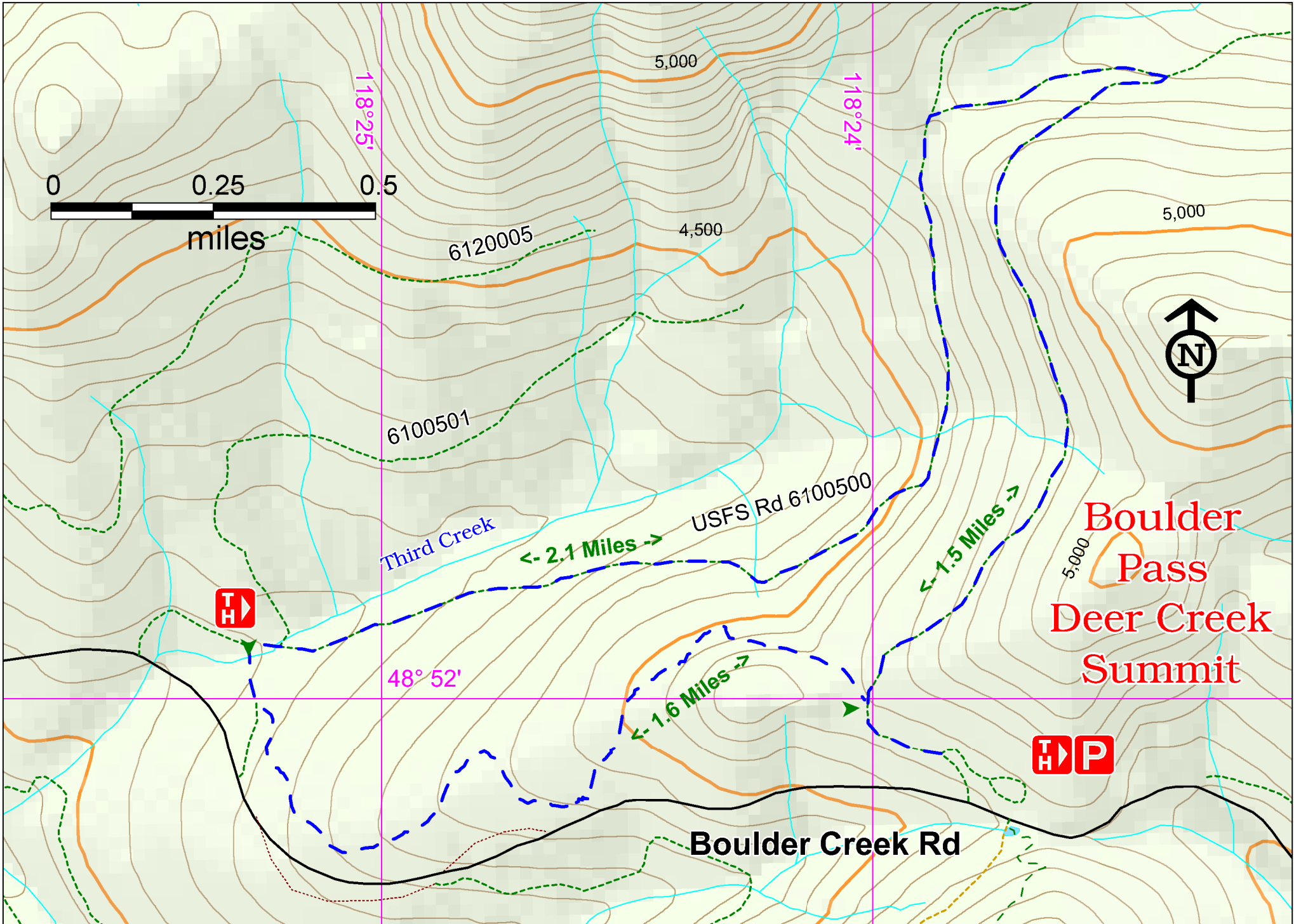


Boulder Summit Ski Trail #40



Access:

From the Kettle Falls Information Center, drive west on Hwy 395 3 miles to the junction with Hwy 20. Turn right and drive 16 miles to the junction with Boulder Creek Rd. Turn left and drive 12 miles to the summit of Boulder Creek/Deer Creek pass. The snow park and trailhead are on the left (North) side of the road. An exit point for the trail is two miles down on the west side of the summit, USFS Rd 500.



Points of Interest



Ski Trail is Dog-friendly



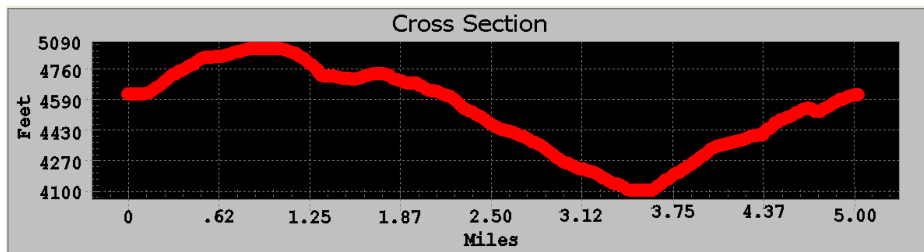
Section of groomed trail

History:

Deer Creek/Boulder Creek was the original route of General Tecumseh Sherman crossed in 1883 with a contingent of soldiers to inspect the border with Canada. This old mountain range was once much higher but slid apart and volcanic rocks filled the Curlew Lake Valley with rich mineral deposits.

Cautions:

Look out for snow grooming equipment on the trail. Be aware of potential avalanche danger on the south loop of the trail.

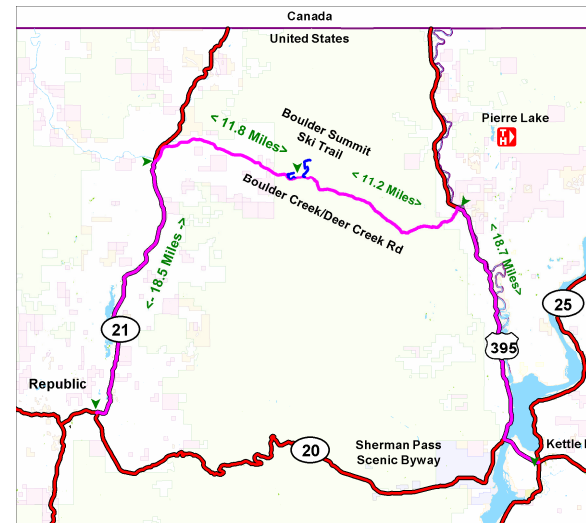


Boulder Summit Motorway Ski Trail

Characteristics	#82	#16	#13	#12
Elevation at Trailhead	4600 ft			
Highest Point	5085 ft			
Elevation Change	40 ft			
Length	5.6 Miles Total			
Difficulty	Easy to difficult			
Season	Winter			

Description:

Dual tracks, skate lane 9 kilometers; marked un-groomed trails; dog-friendly trails. Sanitary facilities, ski patrol, instruction area, campground, scenic view points Sno-Park Permit required during the season. Exception: From April 1 to 30, a Sno-Park Permit may or may not be required.



Emergency phone number: 911

For more information:

Republic Ranger District
(509) 775-7400