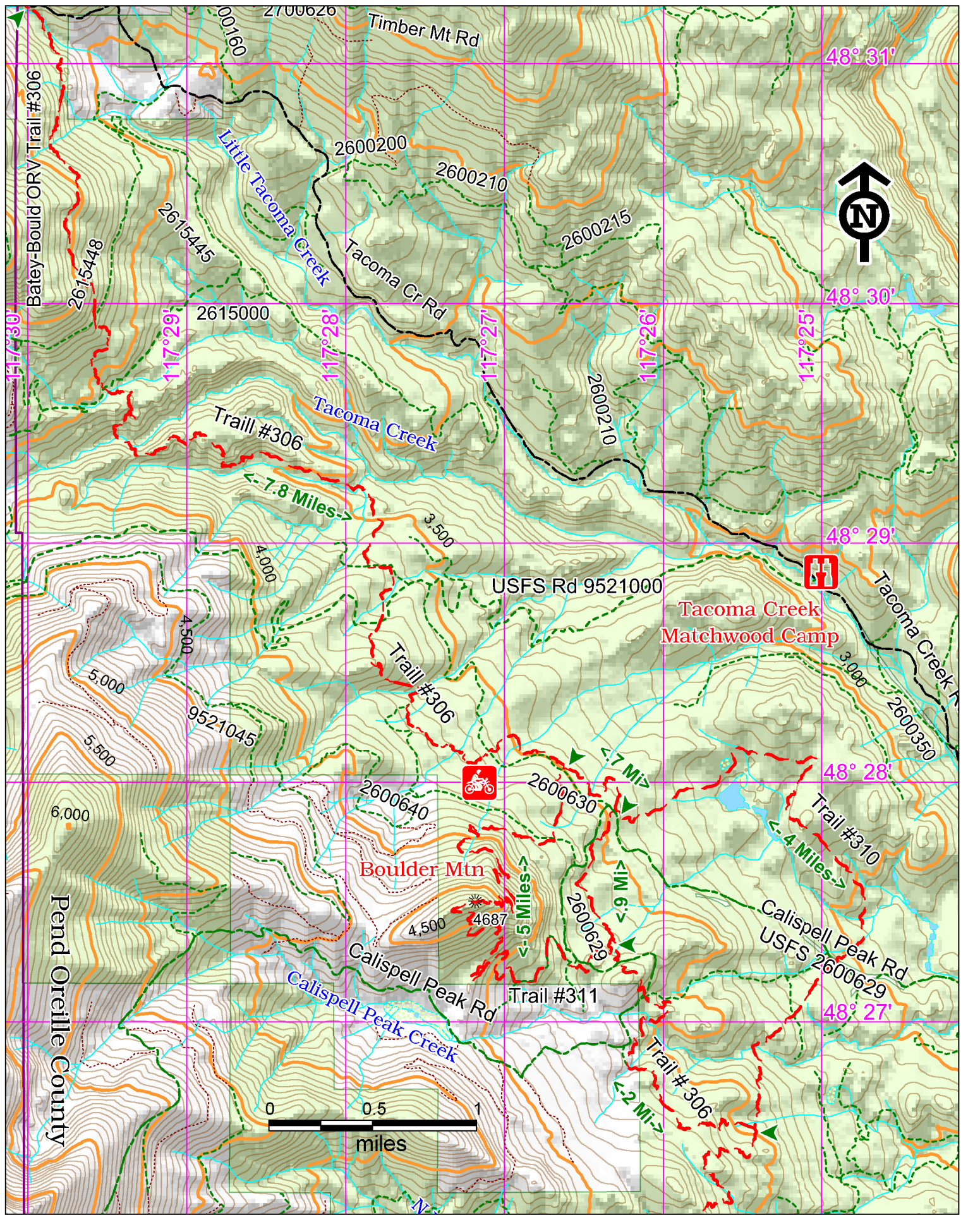


Boulder Mt ORV Area - #306 (10.5 Mi.), #310, #311



Access:

From Intersection of State Hwy 20 and US Hwy 395 in Colville, travel east 19.5 miles to Olson Cr/ Tacoma Cr Rd. Turn right. Travel 5 miles to the north end of USFS Trail #306 on the right and the south end of DNR Tacoma Divide trail on the left.

This Trailhead may also be reached from Hwy 20 in the Pend Oreille Valley by traveling northwest on Tacoma Creek for 15 miles.



Points of Interest



Windfall on Trail #311

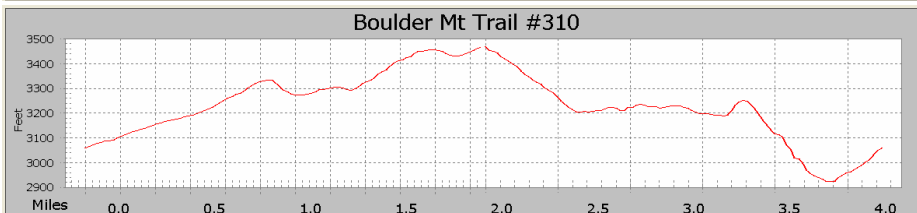
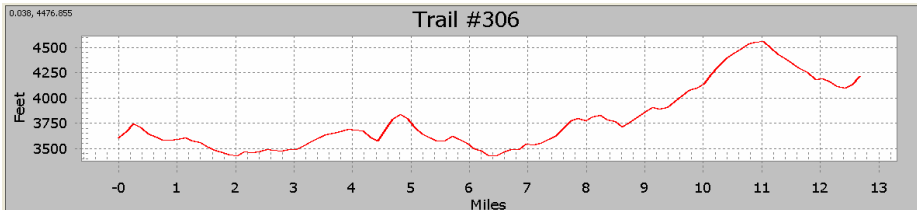


Boulder Mt.

History: These trails parallel Tacoma Creek Rd which was a trail used by natives for thousands of years to get to salmon at Kettle Falls.

Cautions:

Be prepared for changes in weather. Trail may be blocked by windfall.

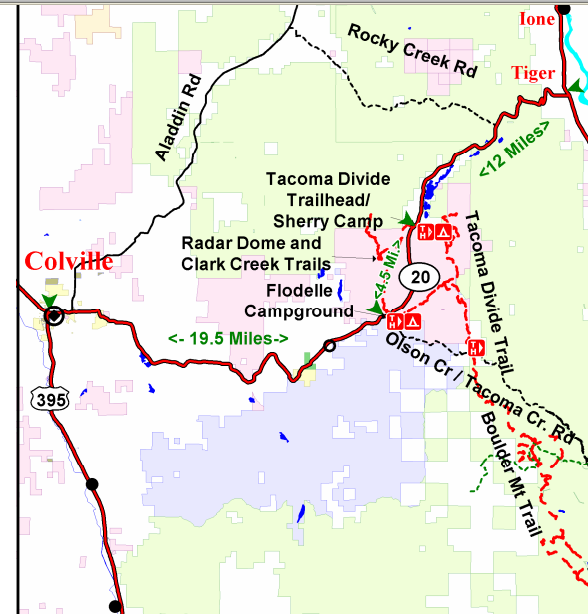
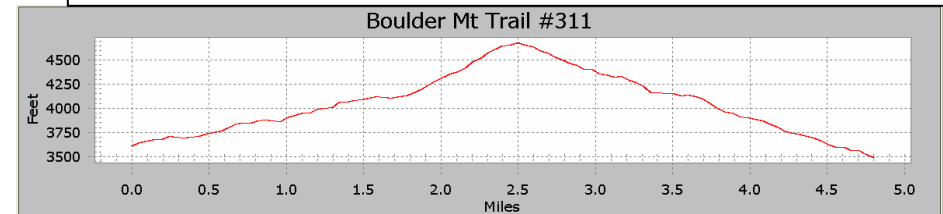


Boulder Mt Trails #306, #3010, #311

Characteristics	# 306	# 310	# 311
Elevation at Trailhead	3625 ft	3050 ft	3500 ft
Highest Point	4525 ft	3475 ft	4575 ft
Elevation Change	1000 ft	570 ft	1075 ft
Length	12.8 Miles	4 Miles	5 Miles
Difficulty	Moderate	Difficult	Difficult
Season	Spring, Summer, Fall		

Description:

This portion of the Batey-Bould trail system offers a series of interconnecting loops with Trail #306 connecting to the 45 Mile long Little Pend Oreille single track trails. Numerous bridges and puncheons cross creeks and seeps. Terrain ranges from meadows to mountain peaks. Trail #311 offers good views but may be blocked by windfalls.



Emergency phone number: 911

For more information:

Newport Ranger District
(509) 447-7300