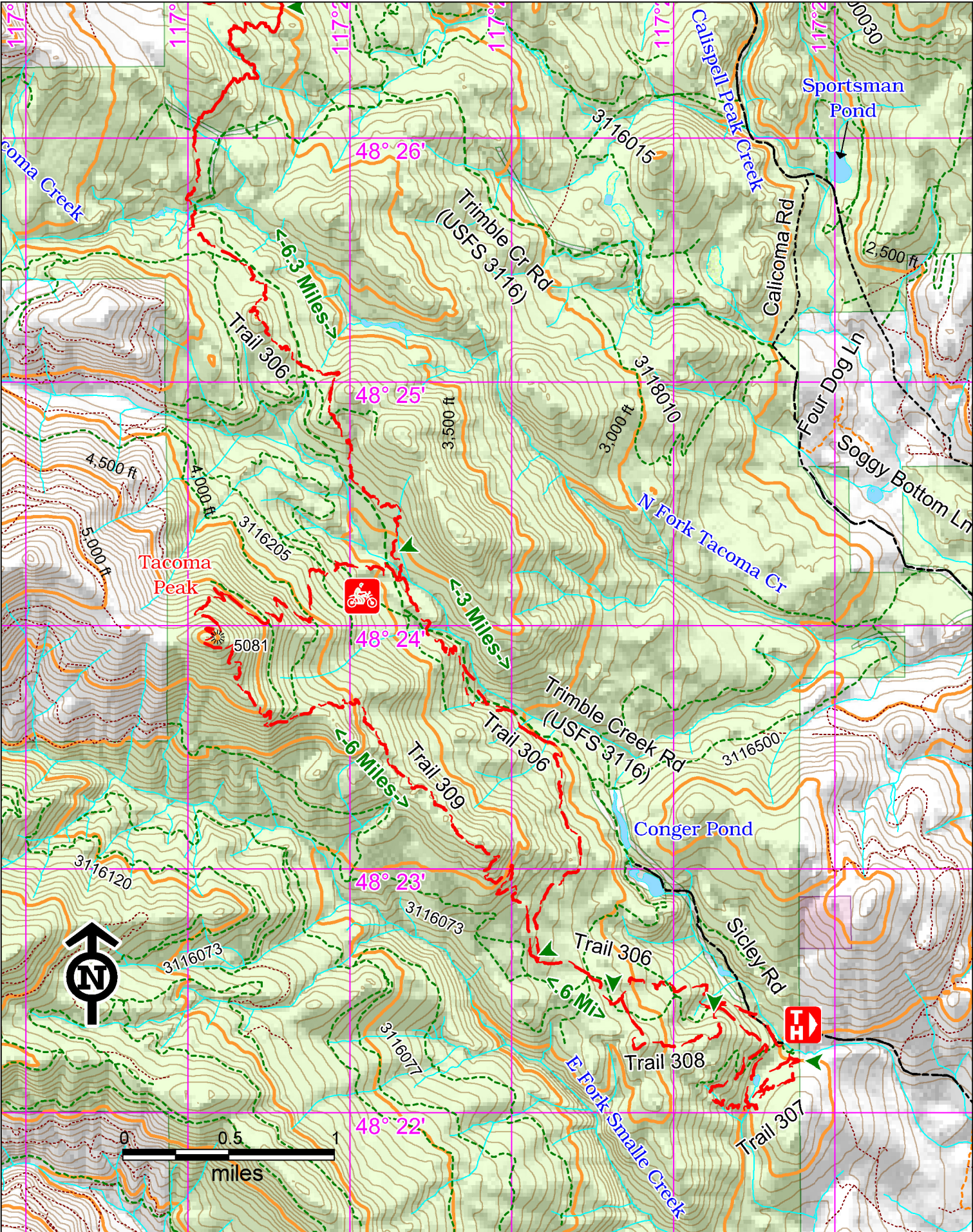


Batey-Bould ORV Area - #306 (12 Mi), #307, #308, #309



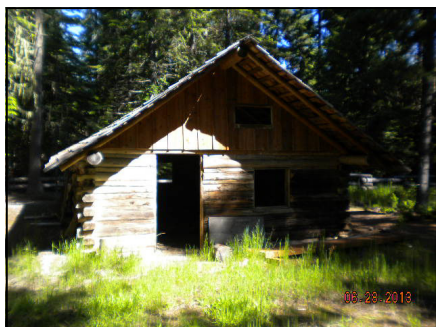
Access:

Travel north on State Hwy 20 18 miles from Newport. Turn left on Cusick Meadow Rd. Travel 1.7 miles and turn a sharp right onto Westside Calispell Rd. Travel 4.7 miles and turn left on Sicley Rd. Travel 1.5 miles to the trailhead.

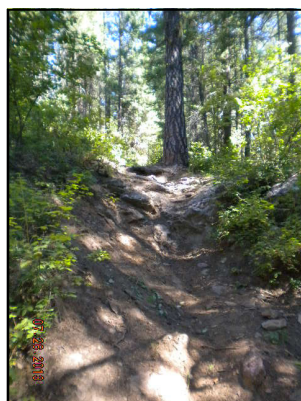
Trail #306 intersects Tacoma Creek Rd. 15 miles from State Hwy 20.



Points of Interest



Uptagraph Homestead Cabin

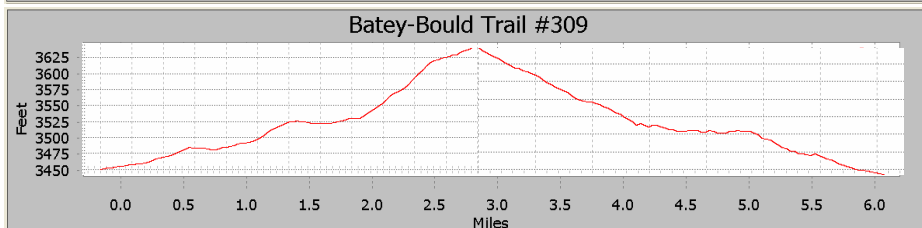
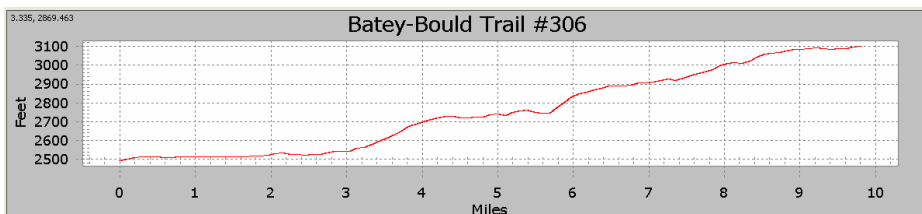


Extremely Difficult #309

History: These trails parallel Tacoma Creek Rd which was a trail used by natives for thousands of years to get to salmon at Kettle Falls.

Cautions:

Be prepared for changes in weather. Trail may be blocked by windfall.

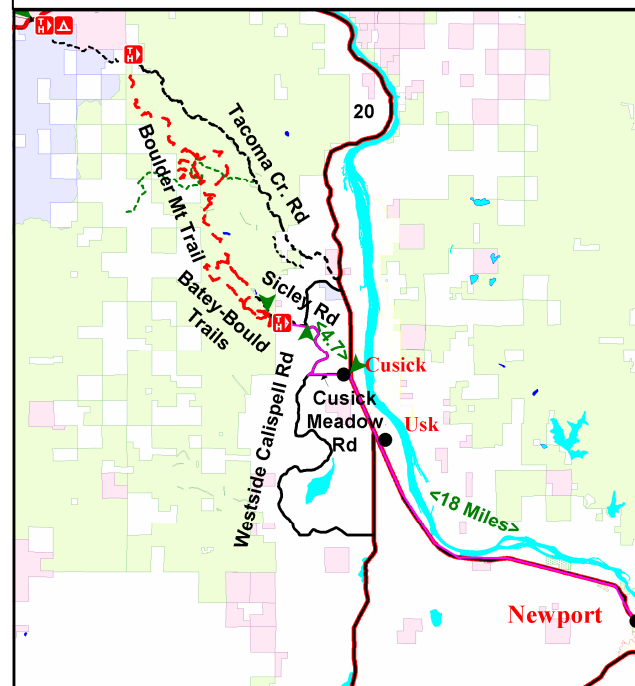


Batey-Bould Trails #306, #307, #308, #309

Characteristics	#306	#307	#308	#309
Elevation at Trailhead	2500 ft	2500 ft	2500 ft	3750 ft
Highest Point	3100 ft	2880 ft	3150 ft	5050 ft
Elevation Change	600 ft	380 ft	650 ft	1300 ft
Length	12 Miles	1.4 Miles	1.4 Miles	6 Miles
Difficulty	Moderate	Difficult	Moderate	Most Dif.

Description:

This portion of the Batey-Bould trail system offers a series of interconnecting loops with Trail #306 connecting to the 45 Mile long Little Pend Oreille single track trails. Trails #308 and #309 offer good views but are for advanced riders since they have steep climbs and descents. Trail #306 passes the Uptagraph Homestead. Numerous bridges and puncheons cross creeks and seeps. Terrain ranges from meadows to mountain peaks.



Emergency phone number: 911

For more information:

Newport Ranger District
(509) 447-7300