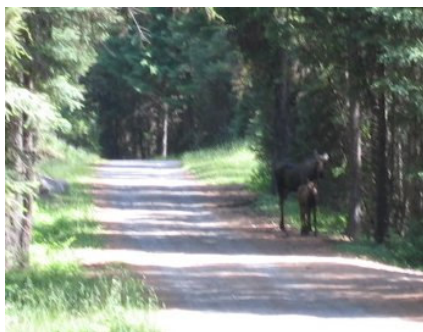


Access: From Republic, take highway 20 east 7 miles to county Hall Creek Rd. Turn right. Hall Creek road becomes forest road 20504. Follow it for 6.6 miles. Turn slight left onto forest road 2054-600, and follow it or 5.8 miles. The trailhead will be on your left. Forest road 2054-600 is not maintained for low clearance vehicles. The trail meets the Kettle Crest Trail #13 at the top and can also be accessed from Inchelium on Hall Creek Rd.



Points of Interest



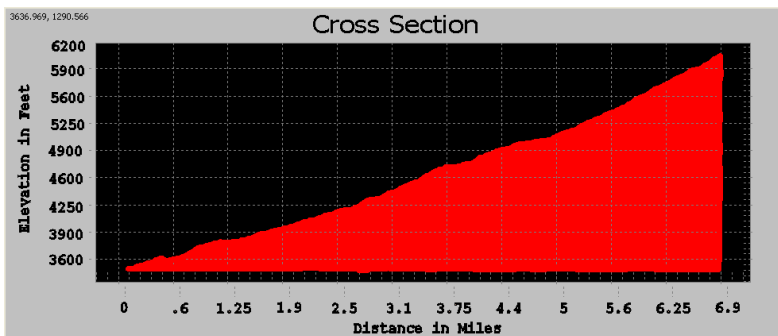
View #1: Moose on Road



View #2: Meadows

History: Barnaby Buttes, Barnaby Creek and Barnaby Island derive their name from Chief Joseph Barnaby, who migrated from Salem Oregon around 1840 with his Colville Indian wife, Josephty Boucher. They re-established a Native American community at the mouth of Barnaby Creek.

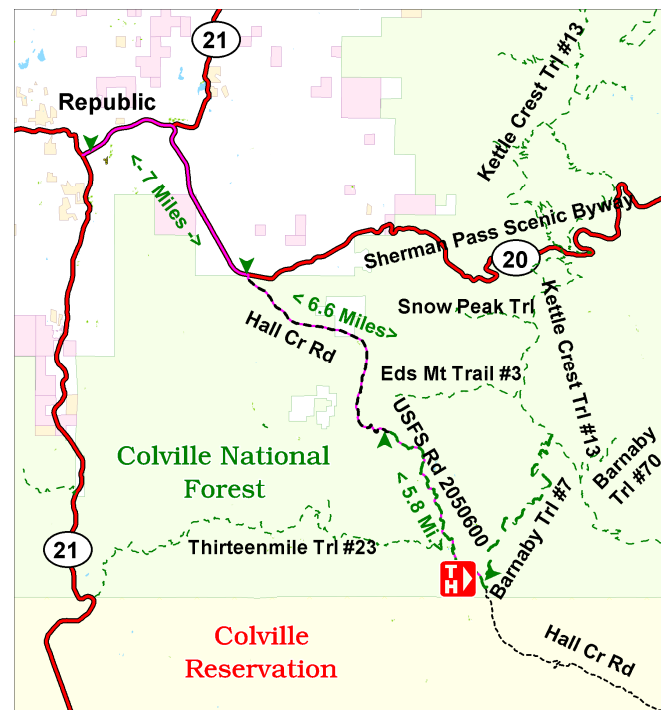
Cautions: Treat surface water before drinking. Prepare for all weather. Watch out for large animals. No facilities and limited parking.



Barnaby Butte Trail # 7

Characteristics	
Elevation at Trailhead	3345 ft
Highest Point	6095 ft
Elevation Change	2750 ft
Length	6.9 Miles
Difficulty	Difficult
Season	Spring and Summer

Description: This trail follows a closed road for the first 3 miles. Experience a variety of forest environments abundant wildlife, seasonal wildflowers, wild strawberries, and huckleberries. There are dispersed campsites along the trail. This is a steep trail with great views at the top. A loop or one-way travel can be arranged by connecting with the Kettle Crest Trail or the Thirteen Mile Trail #23 a mile north on Hall Creek Rd.



Emergency phone number: 911

For more information:

Republic Ranger District
180 N Jefferson Ave
Republic, WA 99166

509-775-7400

Barnaby Butte Trail #7

