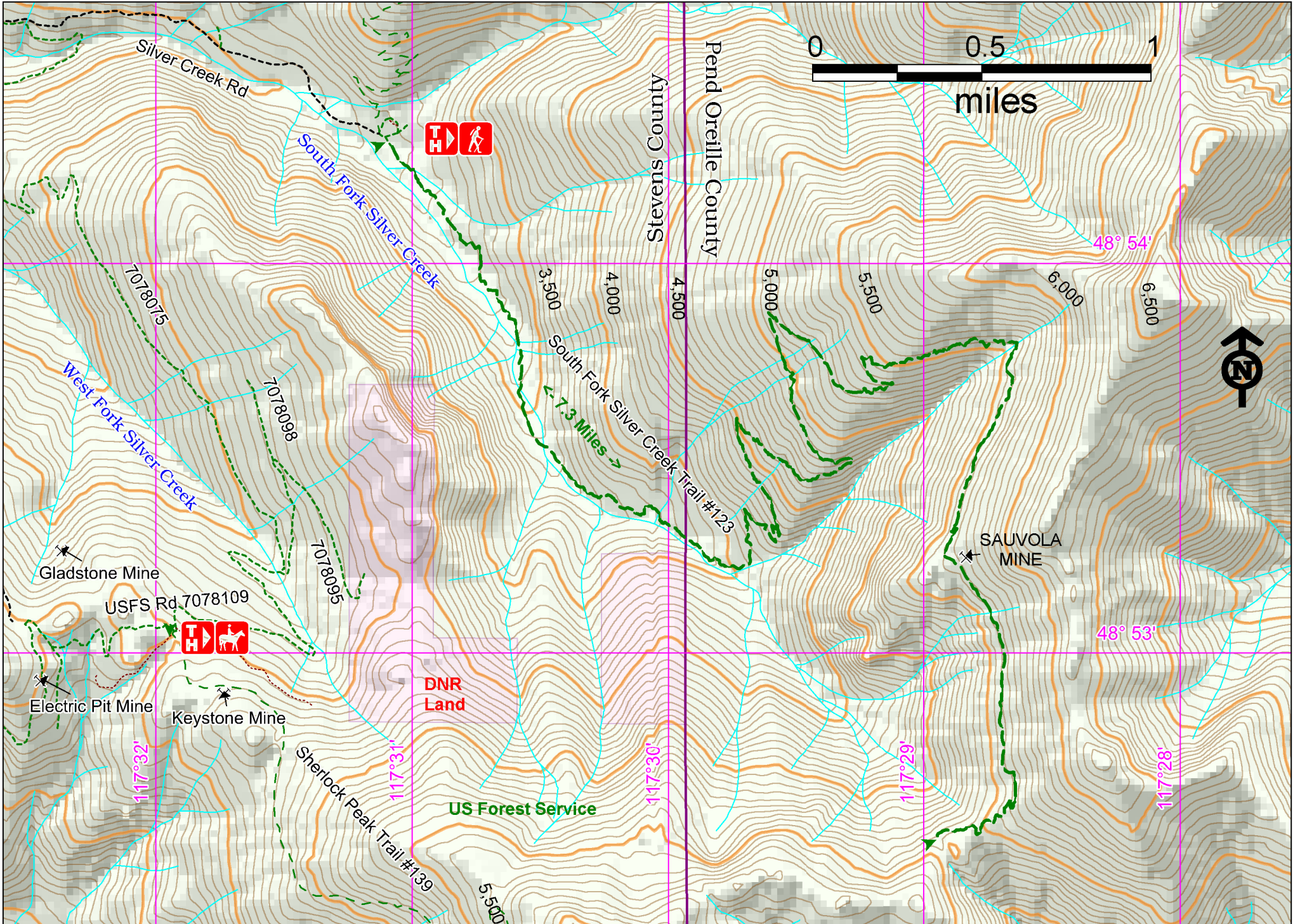


South Fork Silver Creek Trail #123 7.3 Miles



Access:

From the intersection of State Hwy 20 and US Hwy 395, go east one mile. Turn left on Aladdin Rd. Drive 37.5 miles staying to the right onto Deep Lake Boundary Rd to Silver Creek Rd. Turn right and drive 3.7 miles on Silver Creek Rd to the trailhead.



Points of Interest



Horseback travel is welcome



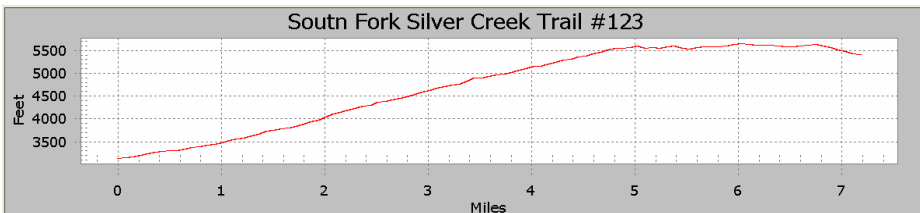
S. Fk Silver Cr and Gunsight Pass

History:

This trail passes an active silicon mining claim but has views down Silver Creek of some of the most historic mines in Stevens County in the Electric Point area. The main ores were lead and zinc, but significant amounts of silver were also extracted. Electric Point got its name from the frequent lightning strikes which metals in the earth attracted.

Cautions:

Be prepared for changes in weather. Large animals may be encountered on this trail. Bring layered clothing, contour maps, survival kit and ample food and water. Treat water.



South Fork Silver Creek Trail #123

Characteristics	South Fork Silver Creek
Elevation at Trailhead	3180 ft
Highest Point	5550 ft
Elevation Change	2370 ft
Length	7.3 Miles
Difficulty	Most Difficult
Season	Spring, Summer, Fall

Description:

This is a difficult but rewarding hike, most often taken on horseback. The wooded trail crosses several creeks. Views are of both the Pend Oreille Valley and the Kettle Crest. A convenient parking area at the trailhead allows horse trailer unloading and dispersed camping. The same parking area also serves the Silver Creek Trail #119 which leads to Abercrombie Mt.



Emergency phone number: 911

For more information:

**Three Rivers
Ranger District
(509) 738-7700**