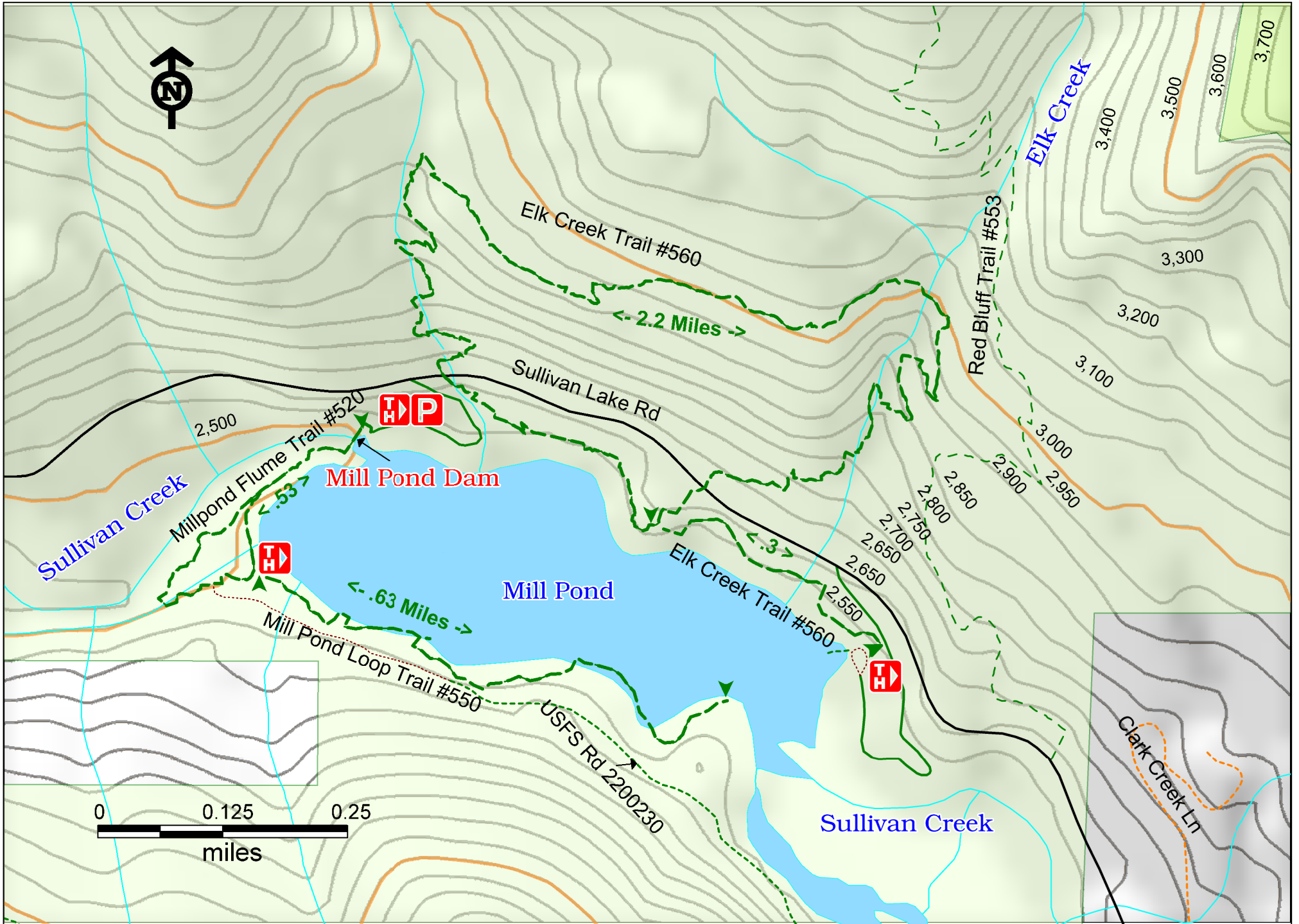


Mill Pond Loop #550, Mill Pond Flume #520, Elk Creek #560



Access:

From Hwy 31 south of Ione drive 14.3 miles north on Sullivan Lake Rd. Turn left into the Mill Creek Trail site.

From the town of Metaline Falls, follow State Hwy 31 north for 2.4 miles. Turn right on Sullivan Lake Rd. Drive 3.2 miles to the site entrance.

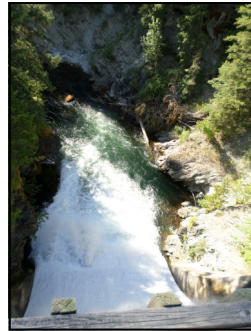
The Elk Creek Trail can be accessed from the campground on the east side of the pond or the entrance road on the west side.



Points of Interest



View from West Shore



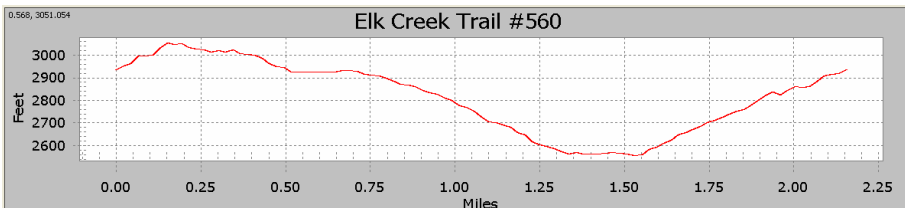
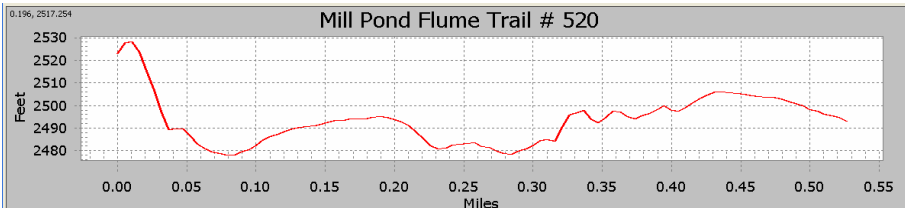
View from Millpond Dam

History:

The Mill Pond was dammed in 1911 by Lewis Larson to provide power to the city of Metaline Falls and the mining and milling operations there which included a cement plant and a lead mine.

Cautions:

Wear sturdy shoes. Surface water should be treated.

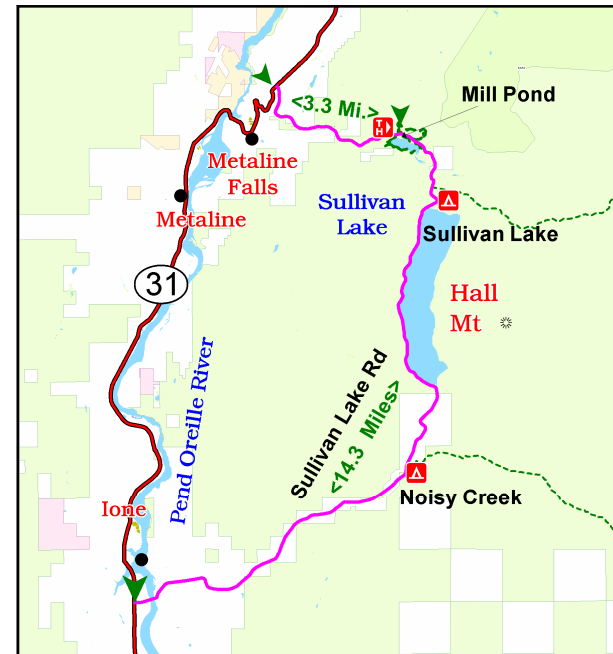


Mill Pond Flume Trail #520, Mill Pond Loop Trail #550, Elk Creek Trail #560

Characteristics	#520	#550	#560
Elevation at Trailhead	2522 ft	2510 ft	2550 ft
Highest Point	2528 ft	2527 ft	3070 ft
Elevation Change	52 ft	17 ft	520 ft
Length	.53 Miles	.63 Miles	2.5 Miles
Difficulty	Easy	Easy	Moderate
Season	Spring, Summer, Fall		

Description:

These are easy trails suitable for a family hike. The Mill Pond is also known as a gold panning prospect. It will eventually be drained to allow cooler water to sustain the native fish populations of the creek. Camping is available on the east end of the pond. There is interpretive signage along the Mill Pond Flume Trail.



Emergency phone number: 911

For more information:

Sullivan Lake Ranger District
(509) 446-7500