

## Access:

From Republic Travel 2.5 miles north on Highway 20/21. Turn left at the junction of 20 and 21 north. Travel 9 miles. Turn right on Lambert Creek Rd. Travel 5 miles and continue on Forest Service Road #2156 2.3 miles. Turn left on Forest Service Road #300. Travel 2.6 miles to the Lambert Trailhead. (There are no facilities at this trailhead.)



## Points of Interest



View #1: Copper Mt Fire



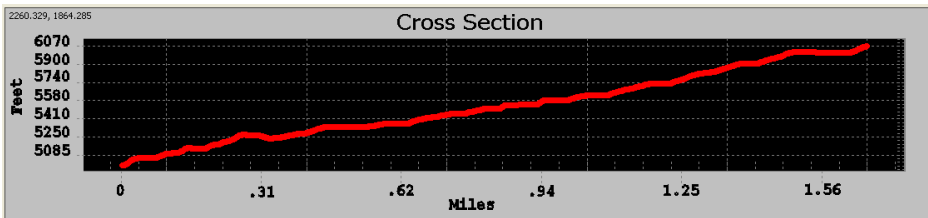
View #2: Kettle Crest View

## History:

The Lambert allotment of land given to natives was at the head of Lambert Creek. The road at the top end of the creek skirts the north end of the Belcher Mining District. Red and yellow tailings from the Belcher Mine can be seen to the west as you drive to the trailhead. The Old Stage Trail once carried supplies between Marcus and Belcher City.

## Cautions:

Treat surface water before drinking. Prepare for all weather. Watch out for large animals. No facilities and limited parking.

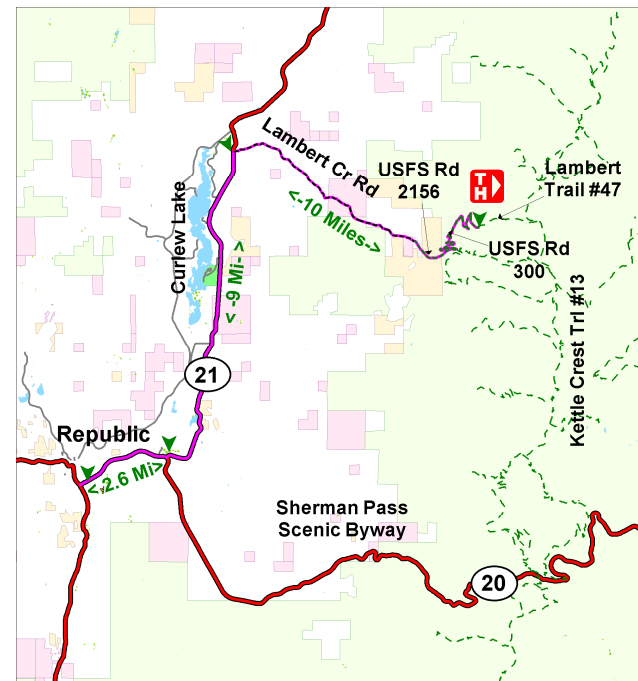


# Lambert Trail #47

Characteristics	
Elevation at Trailhead	5000 ft
Highest Point	6075 ft
Elevation Change	1075 ft
Length	1.6 Miles
Difficulty	More to Most Difficult
Season	Spring, Summer, Fall, Winter

## Description:

This is a steady climb through meadows and open stands of Ponderosa Pine, Fir and Larch. Both springs and a stock watering trough are found along the way. Much of the trail is recovering from the Copper Mt fire of 1986, so shelter from the weather is scarce, but views over long distances are plentiful and so are the wildflowers. Be prepared for sudden changes in the weather.



Emergency phone number: 911

For more information:

**Republic District**  
(509) 775-7400

# Lambert Trail #47

