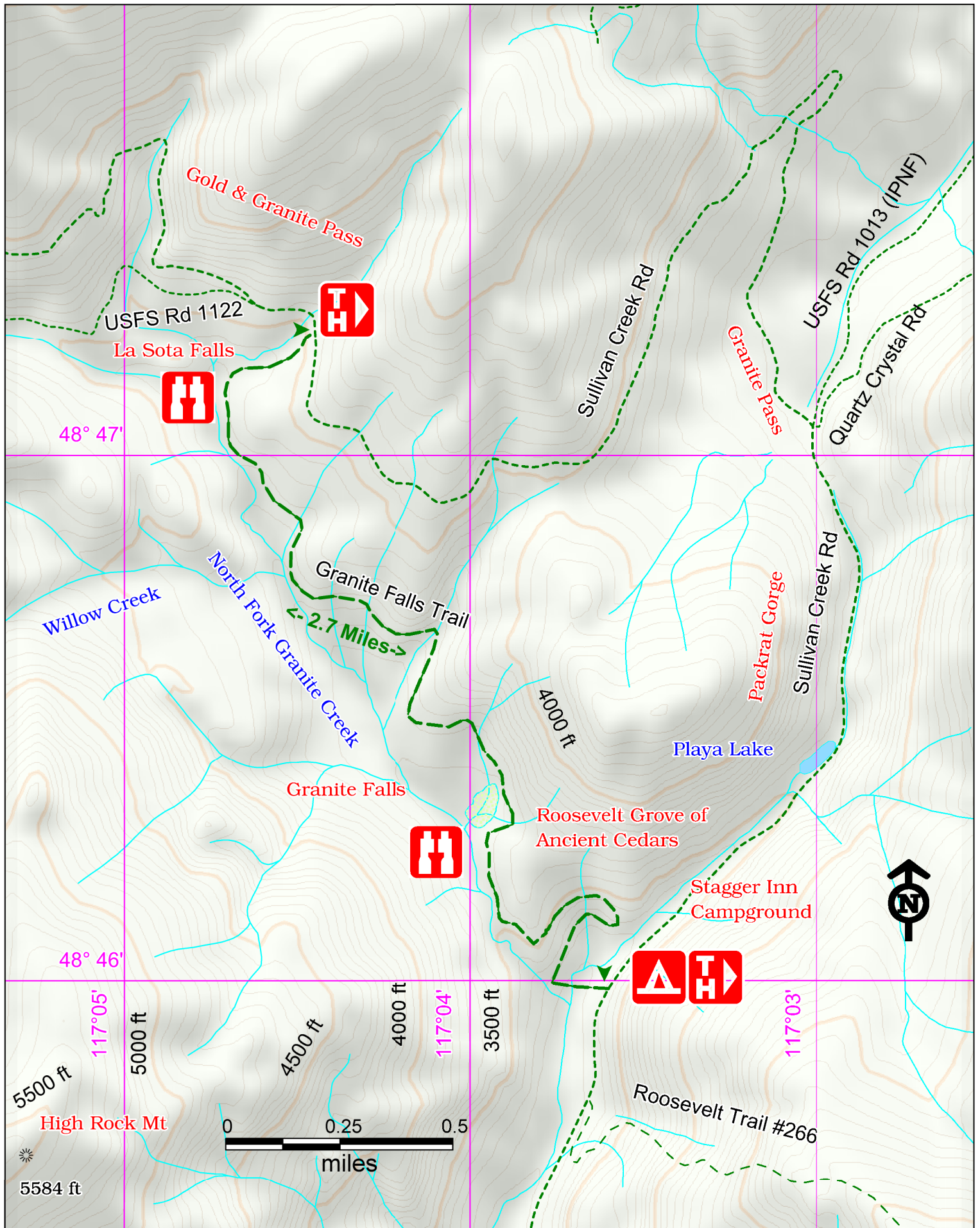


Granite Falls Trail



Access:

From Hwy 31 south of Ione drive 13 miles north on Sullivan Lake Rd. Turn right on Sullivan Creek Rd and drive 6 miles. Turn Right on Sullivan/Pass Creek Rd and drive 10.5 miles to the north trailhead.

Continue on Sullivan/Pass Creek Rd 2.2 miles, turn right on USFS Rd 302. Travel 2.4 miles to the Roosevelt Grove of Ancient Cedars and the South Trailhead.



Points of Interest



Remains of a Fire Lookout



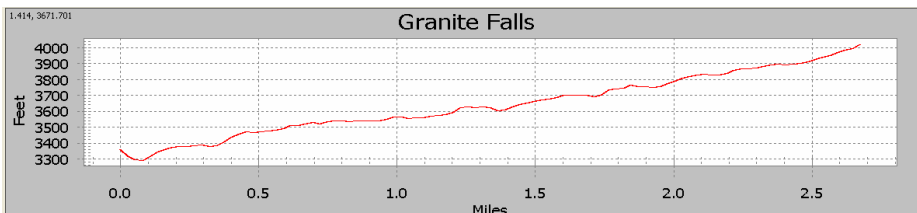
View from Abercrombie

History:

The trailhead was named after a fire camp that was used in 1926 fighting the fire that destroyed all but two small groves of ancient cedar tree. Firefighters weary from hiking an battling blazes more or less staggered into camp and someone named it "Stagger Inn".

Cautions:

Off-trail climbing on rocks above the falls can be very hazardous. Please supervise children. The area is environmentally sensitive. Walk with care.

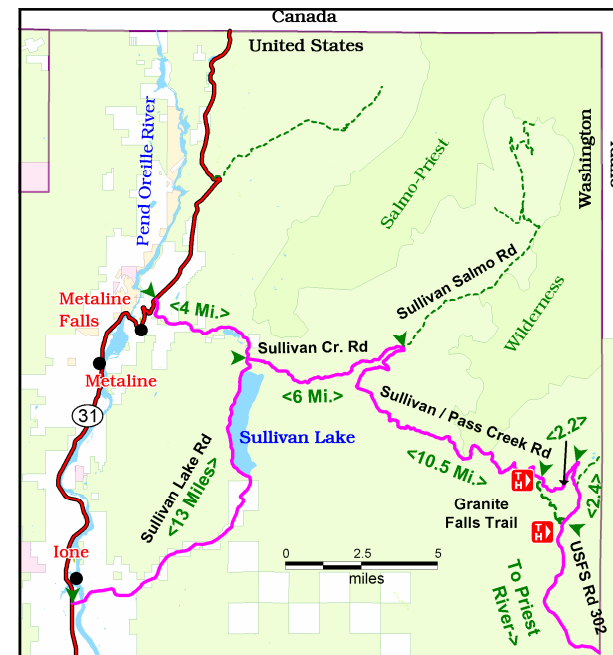


Granite Falls Trail #301

Characteristics	Granite Falls
Elevation at Trailhead	5225 ft
Highest Point	7025 ft
Elevation Change	1800 ft
Length	3.9 Miles
Difficulty	moderate climb to top
Season	Spring, Summer, Fall

Description:

This is a beautiful area to visit. There is also a short trail through the Grove of Ancient Cedars which range in age from 800 to 3000 years. There are two groves, upper and lower and two water falls on Granite Creek. The trail along an old road to the north trailhead is very brushy. Access from the lower trailhead is advised. Camping is available at Stagger Inn.



Emergency phone number: 911

For more information:

Priest Lake Ranger District
(208) 443-2512