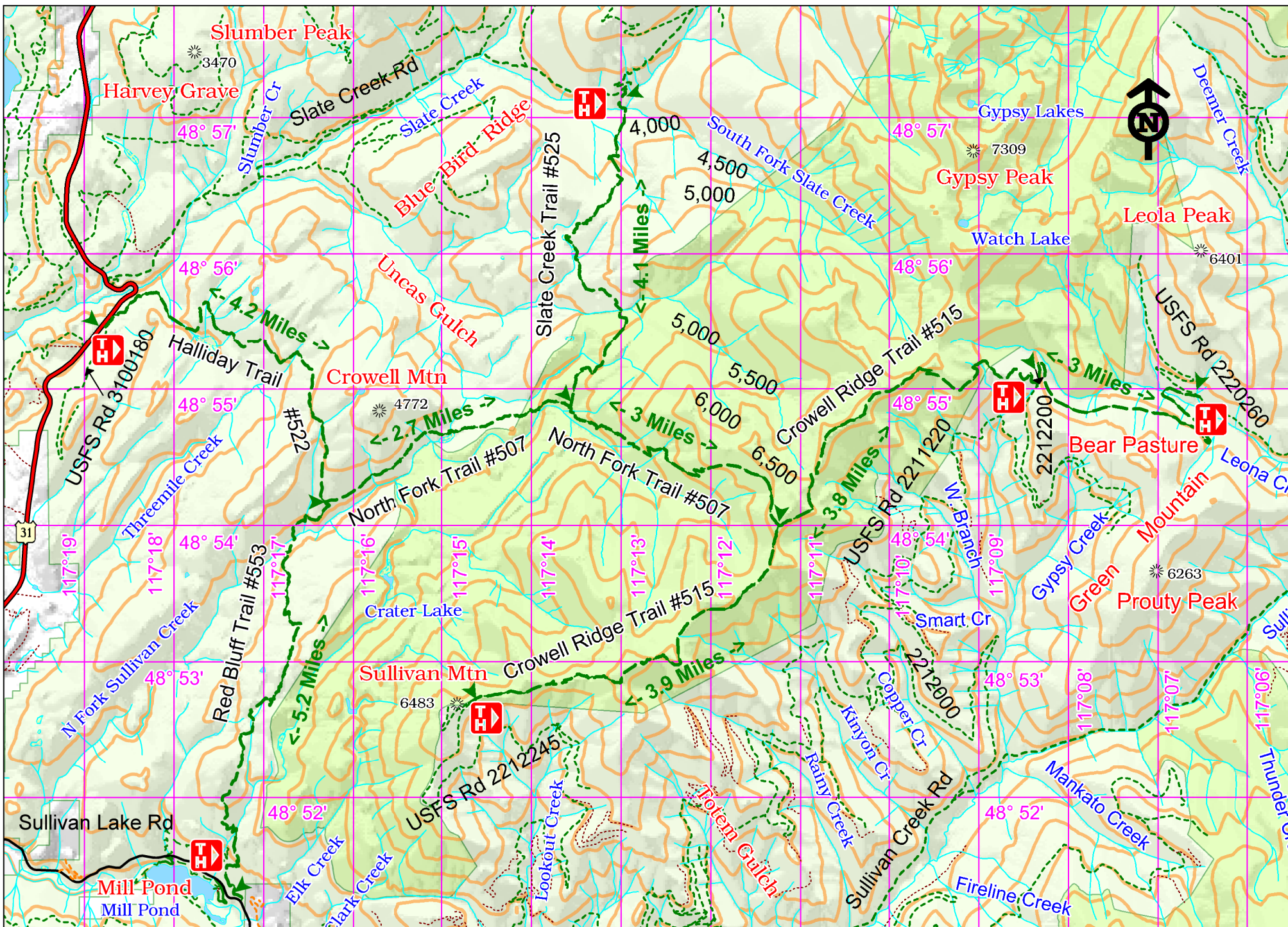


# Crowell Ridge, Halliday, North Fork, Red Bluff, Slate Creek Trails



## Access:

From Hwy 31 head east over the Ione Bridge 13 miles past Sullivan Lake. Turn right on Sullivan Cr. Rd. Travel 6 miles. Turn left on Sullivan Salmo Rd. Turn left onto FS Rd 260. Travel 2 miles to the eastern Crowell Ridge trailhead: From the northern junction of Sullivan Lake Rd and Hwy 31, travel 4.2 miles north to the Halliday trail: or continue .65 miles, turn right onto Slate Cr. And travel 5.5 miles to the Slate Cr. Trail: The Red Bluff trailhead is .7 miles north of the junction with Sullivan Cr on the Sullivan Lake Rd. The Sullivan Mt trailhead to Crowell Ridge is difficult. Consult at the Sullivan Cr. Ranger Station before attempting it.



## Points of Interest

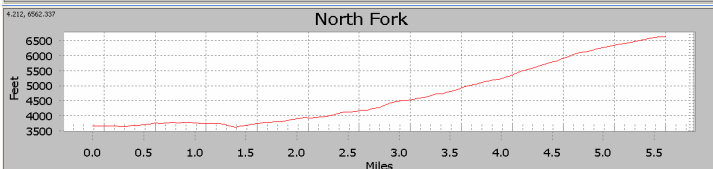
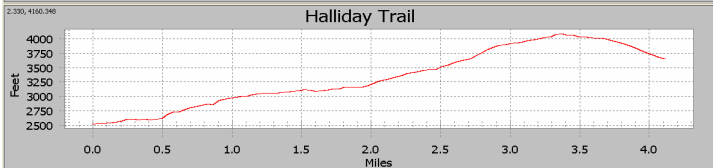
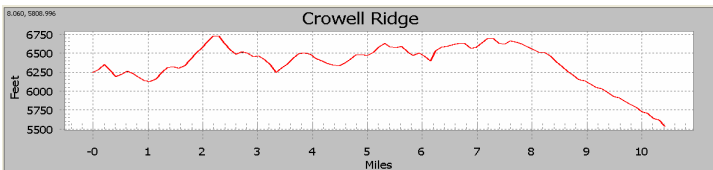


View west from Sullivan Mt trailhead



View north from Sullivan Mt trailhead

## History:



## Cautions:

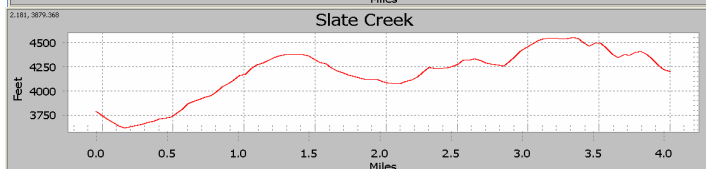
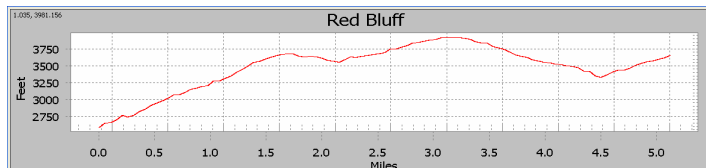
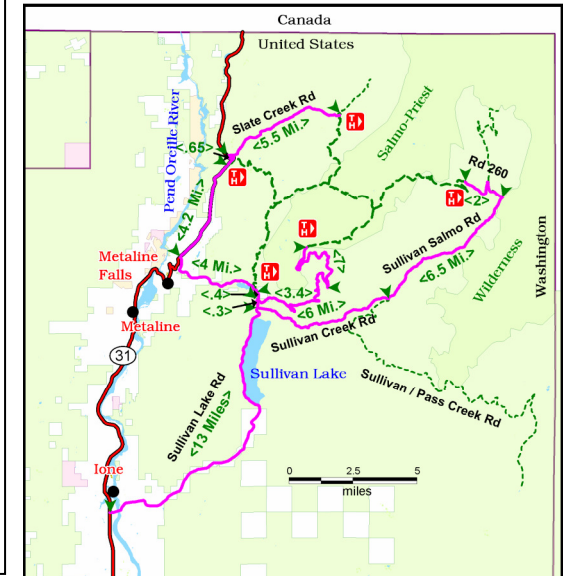
Be prepared for changes in weather. You may encounter bears and other wildlife. Take all precautions necessary to store your food safely and defend your space. No drinkable water is available along these trails without filtration. No mechanized travel is allowed.

## Crowell Ridge #127, Halliday #522, N. Fork Sullivan Creek #507, Red Bluff #553, Slate Creek #525

Characteristics	#127	#522	#507	#553	#525
Elevation at Trailhead	5500 ft	2510 ft	3550 ft	2720 ft	3750 ft
Highest Point	6750 ft	4010 ft	6520 ft	3790 ft	4520 ft
Elevation Change	1250 ft	1500 ft	2970 ft	1070 ft	800 ft
Length	10.7 Mi.	4.2 Mi.	5.7 Mi.	5.2 Mi.	4.1 Mi.
Difficulty	Difficult	Medium	Difficult	Difficult	Difficult
Season	Summer	Summer	Summer	Spring	Summer

## Description:

This complex of trails provides access into and through the west arm of the Salmo-Priest Wilderness Area. These are difficult but spectacular hikes. Summer brings a profusion of flowers and berries but also Grizzly Bears. These trails are only lightly used. Check in at the Sullivan Lake Ranger Station for trail closures and other advice.



Emergency phone number: 911

For more information:

**Sullivan Lake  
Ranger District  
(509) 446-7500**