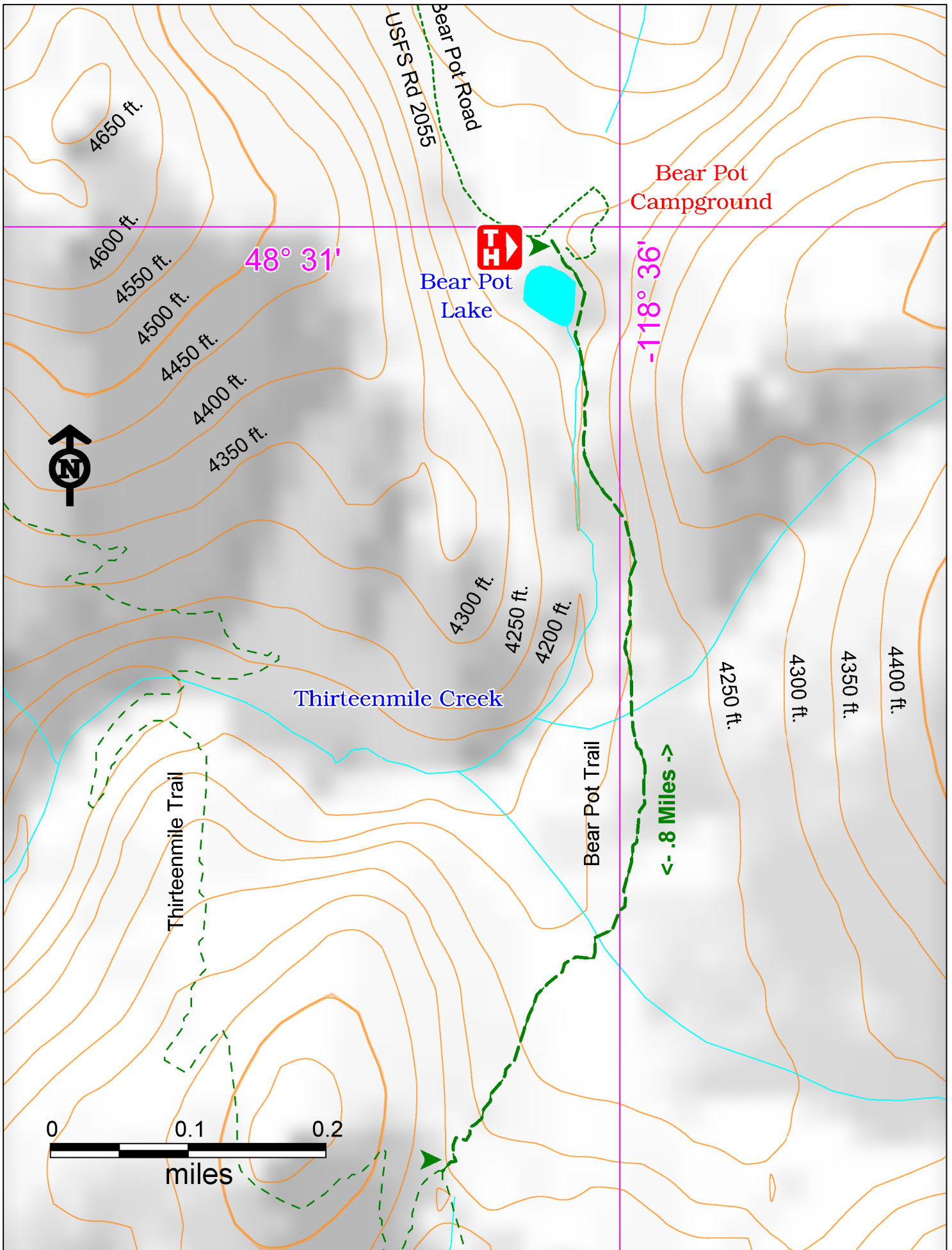


Bear Pot Trail #19 - .8 Miles



Access:

From Republic drive north on Hwy 20/21 2.54 miles. Stay right at the junction with Hwy 21 North. Drive 4.5 miles. Turn right on Hall Creek Rd. Travel 6.6 Miles to Road 600. Stay right. Travel 2.8 miles on FR 2053 to intersection with road 2054. Turn left on to Road 2054. After .6 miles, bear left onto Rd 2055 to Bear Pot Campground 3.4 miles. The trailhead is along Bear Pot Lake going south.



Points of Interest



View #1: Cabin near 13 Mile Trail



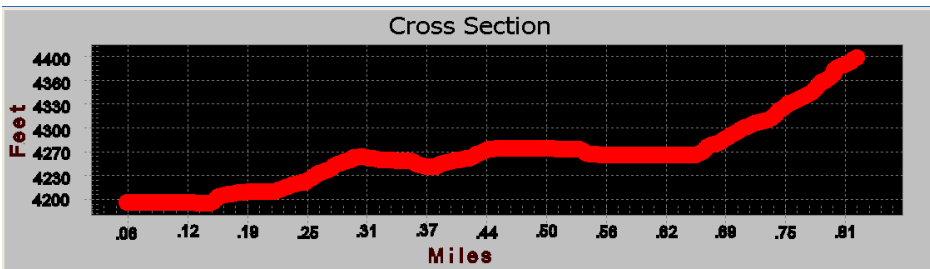
Bear Pot Lake near Trailhead

History:

This trail and campground are called Bear Pot because bears have been observed wallowing in the shallow, seasonal pond to cool off and rid themselves of fleas and ticks. The cabin was probably used by sheepherders since the Thirteenmile trail was a sheep herding route.

Cautions:

Treat surface water before drinking. Prepare for all weather. Watch out for large animals. No facilities. Lower portion of trail may be wet.

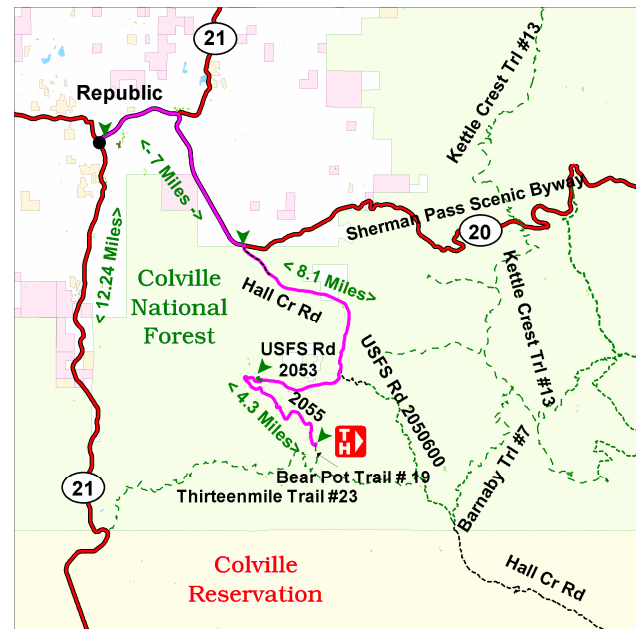


Bear Pot Trail #19

| Characteristics | #82 | #16 | #13 | #12 |
|------------------------|-----|-----|----------------|-----|
| Elevation at Trailhead | | | 4200 ft | |
| Highest Point | | | 4400 ft | |
| Elevation Change | | | 200 ft | |
| Length | | | .8 Miles | |
| Difficulty | | | Easy | |
| Season | | | Spring, Summer | |

Description:

Bear Pot Trail intersects the Thirteenmile Trail near the half-way point. It is short and easy with a 150 foot climb over the last quarter mile. The lower part can be wet, especially in the Spring. The cabin is closer to the Thirteenmile end of the trail. Having a campground at the trailhead makes it convenient for an early start or a late exit from the Thirteenmile trail.



Emergency phone number: 911

For more information:

Republic Ranger District
(509) 775-7400