

Access: From the intersection of Hwy 395 and Hwy 25 in Kettle Falls drive west 13 miles. Turn left on the South Fork Sherman Cr Rd. Drive 6.5 miles and turn left on Barnaby Buttes Rd #500. Drive 2.3 miles to the trailhead. (Temporarily Closed- Call 509-738-7700) From Republic, drive east on Hwy 20 over Sherman Pass. Turn right on South Fork Sherman Creek Road. Drive 6 miles and turn right on Barnaby Buttes Rd #500. Drive 2.3 miles to the trailhead



Points of Interest



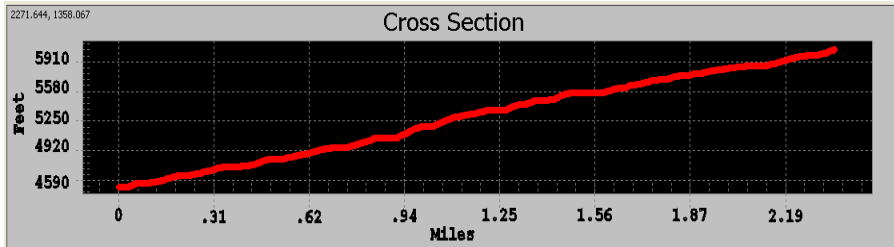
View #1:

View #2:

History: Barnaby Buttes, Barnaby Creek and Barnaby Island derive their name from Chief Joseph Barnaby, who migrated from Salem Oregon around 1840 with his Colville Indian wife, Josephy Boucher. They re-established a Native American community at the mouth of Barnaby Creek. There is still a picnic area on the shores of Lake Roosevelt near Barnaby Island.

Cautions:

Treat surface water before drinking. Prepare for all weather. Watch out for large animals. No facilities and limited parking.

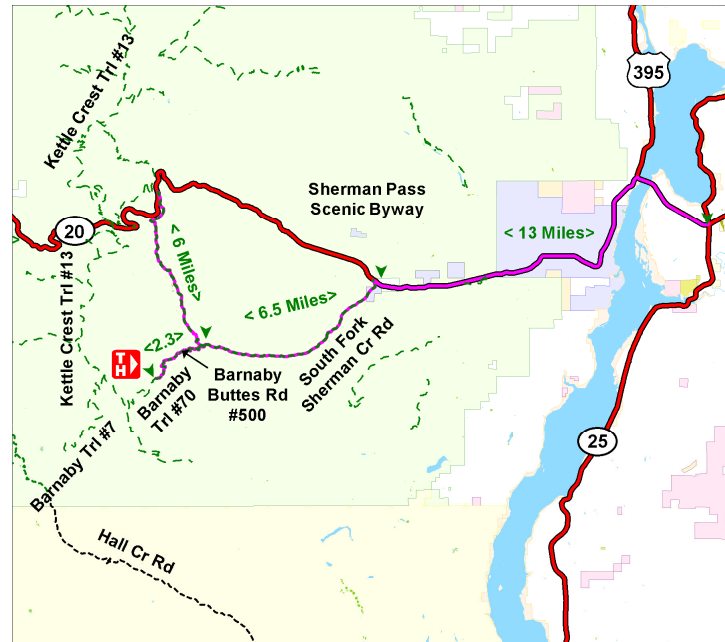


Barnaby Buttes Trail # 70

Characteristics	
Elevation at Trailhead	4500 ft
Highest Point	6050 ft
Elevation Change	1550 ft
Length	2.4 Miles
Difficulty	More Difficult
Season	Summer, Fall and Winter

Description:

4 wheel drive is recommended to access this trailhead. Two small streams and dispersed campsites are available along the trail. The trail was once a road to the Barnaby Buttes Lookout. Nordic skiing is not recommended because of poor access in the winter. The trail offers views of surrounding country. As of August 2012 the South Fork of Sherman Creek road has a bridge out. Take the top entrance to reach the trailhead.



Emergency phone number: 911

For more information:

**Three Rivers
Ranger Station
509-738-7700**

Barnaby Butte Trail #70

